

Fabric & Leather

Overview



FERM
LIVING

Made To Order & Customisation Concept

The Customisation Concept serves as an overview of the various textiles and types of leather available for Ferm Living's upholstered furniture. The materials have been handpicked so you can make our furniture your own.

One size doesn't fit all

Our homes are distinct, personal spaces that uniquely reflect the people who live there. They say the magic happens in the details, and often, that's what makes us fall in love with a specific piece that we want to move into our home. That is precisely why we have introduced the Ferm Living customisation concept, so that you can tailor selected pieces to fit your specific taste.

With our Made to Order products, you can choose between a wide variety of fabrics and leathers that we have selected among leading textile and leather suppliers, making it possible for you to customise your furniture with an array of materials and colour combinations.

The perfect fit

The majority of our sofas and seating collection are included in the customisation concept. Among them are Catena, Rico, Turn, Dase, Buur and family of Herman Chairs.

For our sofas, you can choose between an exciting variety of textiles that range from faded velvet, cottons, linens and wool, available in an array of colours and patterns from premium fabric and leather suppliers that include Kvadrat, Skandilock, Sørensen Leather and Gabriel.

For our Herman Chairs, there are a wide range of options available: customise everything from the frame to the colour of wooden backrest, and choose between various seat fabrics, woods and leathers to form your ideal chair.

To see a complete selection of our Made to Order materials, please refer to the Customisation Concept section of our Product Overview, where you can get an overview of all of the different customisation options that we offer.

We are also happy to upholster furniture using non-standard fabric options and customers' own materials (COM), subject to fabric approval and a minimum order quantity. For further information, please contact our Sales Representatives.

Fabric and Leather options

	Catena Collection	Rico collection	Herman collection	Turn collection	Dase Collectoin	Buur Collection
Price Group 1						
Cotton Linen	•			•	•	
Brushed		•				
Soft Bouclé	•	•	•		•	•
Price Group 2						
Faded Velvet		•				
Grain	•	•	•		•	
Hot Madison	•			•	•	
Main Line Flax		•	•		•	
Rich Velvet	•	•			•	•
Drape	•					
Price Group 3						
Bouclé	•	•	•	•	•	•
Check	•					
Louisiana	•	•				•
Nordic Bouclé	•	•			•	•
Pasadena	•			•		
VEGEA™			•			
Utzon-Can Lis	•	•				
Price Group 4						
Leather - Ultra			•			
Rich Linen	•					
Tonus 4		•	•	•	•	•
Wool Bouclé	•	•				
Price Group 5						
Hallingdal 65	•	•	•	•	•	
Leather - Envy			•			
Patchwork	•					
Price Group 6*						
Sheepskin		•				•

* Only available for Buur Lounge Chair, Rico Lounge Chair and Rico Pouf

Cotton Linen

Composition

60% cotton
40% linen

Fire rating

CAL117: not pass
EN 1021 1/2: not pass
BS 5852 0,1 C&M: pass with a
Crib5 interliner - on request
BS 5852 Crib5: not pass

Martindale

24.000

Price group

1

Care instructions

Vacuum frequently on medium power.
Remove wet stains by carefully dab-
bing with a lint-free cloth or sponge
wrung in warm detergent-free water.
If the stain remains, we recommend
professional dry cleaning.

Colour fastness to light

4 (8)

Pilling

4-5 (5)

Pass for

Catena
Dase
Turn



Natural

Brushed

Composition
100% polyester

Fire rating
CAL117: pass
EN 1021 1/2: not pass
BS 5852 0,1 C&M: not pass - See
alternative UK only option under
Fabric Overview UK / Soft FR.
BS 5852 Crib5: not pass

Martindale
90.000

Price group
1

Care instructions
Vacuum frequently on medium power.
Remove wet stains by carefully dab-
bing with a lint-free cloth or sponge
wrung in warm detergent-free water.
If the stain remains, we recommend
professional dry cleaning.

Colour fastness to light
5 (8)

Pilling
5 (5)

Pass for
Rico



Off-White



Sand



Warm Grey

Soft Bouclé

Composition
90% polyester
5% cotton
5% polyacrylic

Fire rating
CAL117: pass
EN 1021 1/2: pass with treatment
BS 5852 0,1 C&M: pass with treatment
Crib5: not pass

Martindale
75.000

Price group
1

Care instructions
Vacuum frequently on medium power.
Remove wet stains by carefully dabbing with a lint-free cloth or sponge wrung in warm detergent-free water. If the stain remains, we recommend professional dry cleaning.

Colour fastness to light
5 (8)

Pilling
4 (5)

Pass for
Buur
Catena
Dase
Herman
Rico



Off-White/Sand



Natural



Dark Brown

Faded Velvet

Composition
51% acrylic
40% polyester
9% viscose

Fire rating
CAL117: pass
EN 1021 1/2: not pass
BS 5852 0,1 C&M: not pass
BS 5852 Crib5: not pass

Martindale
60.000

Price group
2

Care instructions
Vacuum frequently on medium power.
Remove wet stains by carefully dabbing with a lint-free cloth or sponge wrung in warm detergent-free water.

Colour fastness to light
5 (8)

Pilling
4 (5)

Pass for Rico

More information [here](#).

ferm LIVING colour selection (fabric swatches available)



26 Beige

3 Forest

All available colours



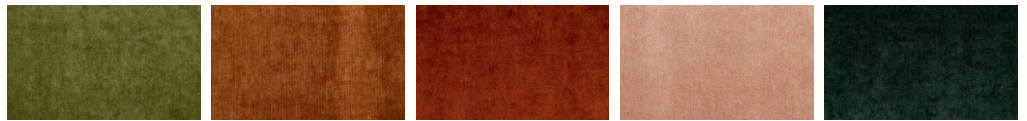
Trend 42K4 Terry pot

Trend 05C6 Persimmon

Trend 4203 Camel

Trend 05EP Saffron

Trend G701 Diesel blue



Trend 16CY Blade

Trend 1712 Cumin

Trend 1388 Deep brick

Trend 61/20BKQ - Soft rose

Trend 2450 Solid - Bottle Green



7 Graphite

56 Natural A6A1

16 Sand

26 Beige 9133

36 Light brown



46 Mid brown 81J5

6 mocca

3 Forest 16Y8

15 Lion 38BNBK

23 Olive



5 Gold 05J2

31 Orange

41 Rouge 13K9

1 Wine

21 Cerise



81 Pastell Pink 10E5BK

11 Lipstick

51 Aubergine 6115

91 Pastel Violet 1041BK

71 Violet



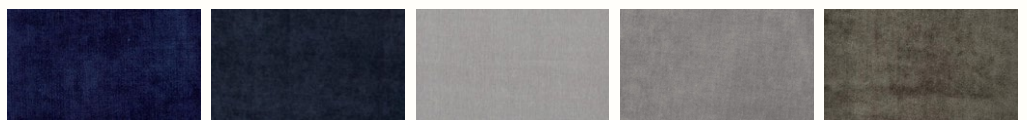
83 Pastell green 1006BK

32 Petrol 3004

22 Turquoise

52 Lagoon G7F7BK

12 Denim 30M7



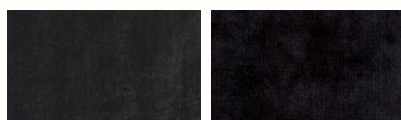
2 Midnight

42 Ocean 0232BK

27 Soft silver A629BK

17 Concrete

47 Fog 84B8



37 Anthracite G2V3BK

4 Black

Grain

By Gabriel

Composition

2287 (unicolor): 92% post-consumer recycled polyester / 8% polyester
 2288 (melange): 80% post-consumer recycled polyester / 20% polyester

Sustainability

STANDARD 100 by OEKO-TEX®

Fire rating

CAL117: pass
 EN 1021 1/2: pass
 BS 5852 0,1 C&M: not pass
 BS 5852 Crib5: not pass

Martindale

100.000

Price group

2

Care instructions

Vacuum frequently on medium power.
 Remove wet stains by carefully dabbing with a lint-free cloth or sponge wrung in warm detergent-free water.
 If the stain remains, we recommend professional dry cleaning.

Colour fastness to light

5-7 (8)

Pilling

5 (5)

Pass for

Catena
 Dase
 Herman
 Rico

More information [here](#).

ferm LIVING colour selection (fabric swatches available)



Cashmere 61252

Caramel 61037

Chocolate 61249

All available colours



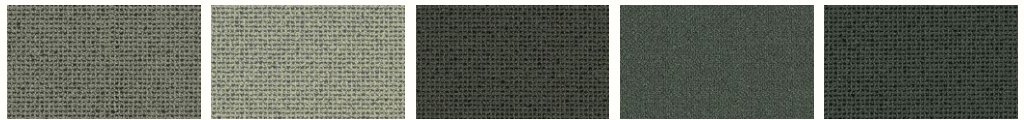
60300

60301

60302

60303

60320



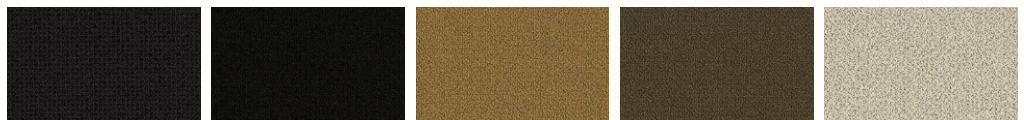
60321

60322

60323

60324

60325



60328

60999

61037

61146

61229



61230

61247

61248

61249

61250



61251

61252

61253

61254

61255



61256

62016

62121

62122

62123



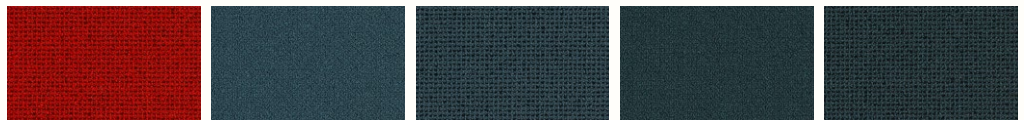
63117

63118

64041

64249

64250



64251

66216

66231

66232

66233



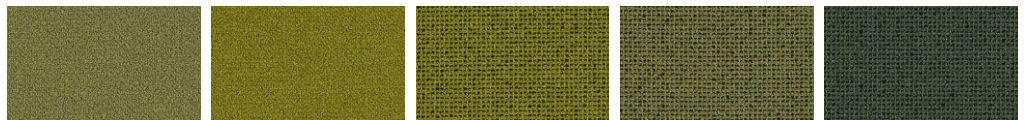
66234

66235

66236

66237

68155



68243

68257

68258

68259

68260

Hot Madison

By Jab

Composition

63% cotton
37% linen

Fire rating

CAL117: pass
EN 1021 1/2: not pass
BS 5852 0,1 C&M: not pass - See alternative UK only option under Fabric Overview UK / Linara FR.
BS 5852 Crib5: not pass

Martindale

55.000

Price group

2

Care instructions

Vacuum frequently on medium power.
Remove wet stains by carefully dabbing with a lint-free cloth or sponge wrung in warm detergent-free water. If the stain remains, we recommend professional dry cleaning.

Colour fastness to light

4-5 (8)

Pass for

Catena
Dase
Turn

More information [here](#):

firm LIVING colour selection (fabric swatches available)

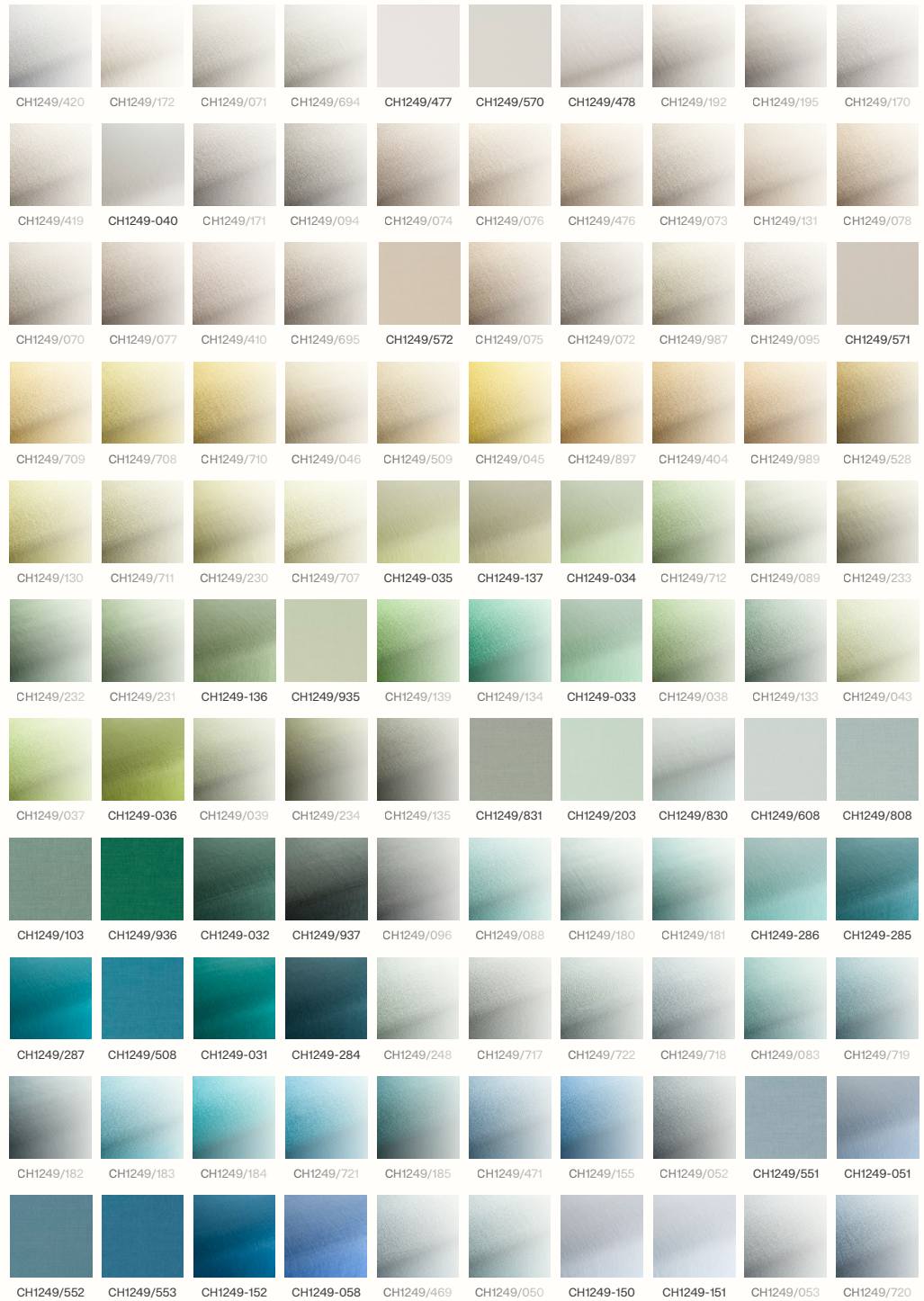


Sand 695

Smoked Chocolate 127

Sugar Kelp 988

All available colours



Hot Madison

By Jab

Composition

63% cotton
37% linen

Fire rating

CAL117: pass
EN 1021 1/2: not pass
BS 5852 0,1 C&M: not pass - See alternative UK only option under Fabric Overview UK / Linara FR.
BS 5852 Crib5: not pass

Martindale

55.000

Price group

2

Care instructions

Vacuum frequently on medium power.
Remove wet stains by carefully dabbing with a lint-free cloth or sponge wrung in warm detergent-free water. If the stain remains, we recommend professional dry cleaning.

Colour fastness to light
4-5 (8)

Pass for

Catena
Dase
Turn

More information [here](#).



Main Line Flax

By Camira

Composition
75% virgin wool
25% flax

Fire rating
CAL117: pass
EN 1021 1/2: pass,
BS 5852 0,1 C&M: pass
Crib5: pass

Martindale
50.000

Price group
2

Care instructions
Vacuum frequently on medium power.
Remove wet stains by carefully dab-
bing with a lint-free cloth or sponge
wrung in warm detergent-free water.
If the stain remains, we recommend
professional dry cleaning.

Colour fastness to light
4-5 (8)

Pilling
4 (5)

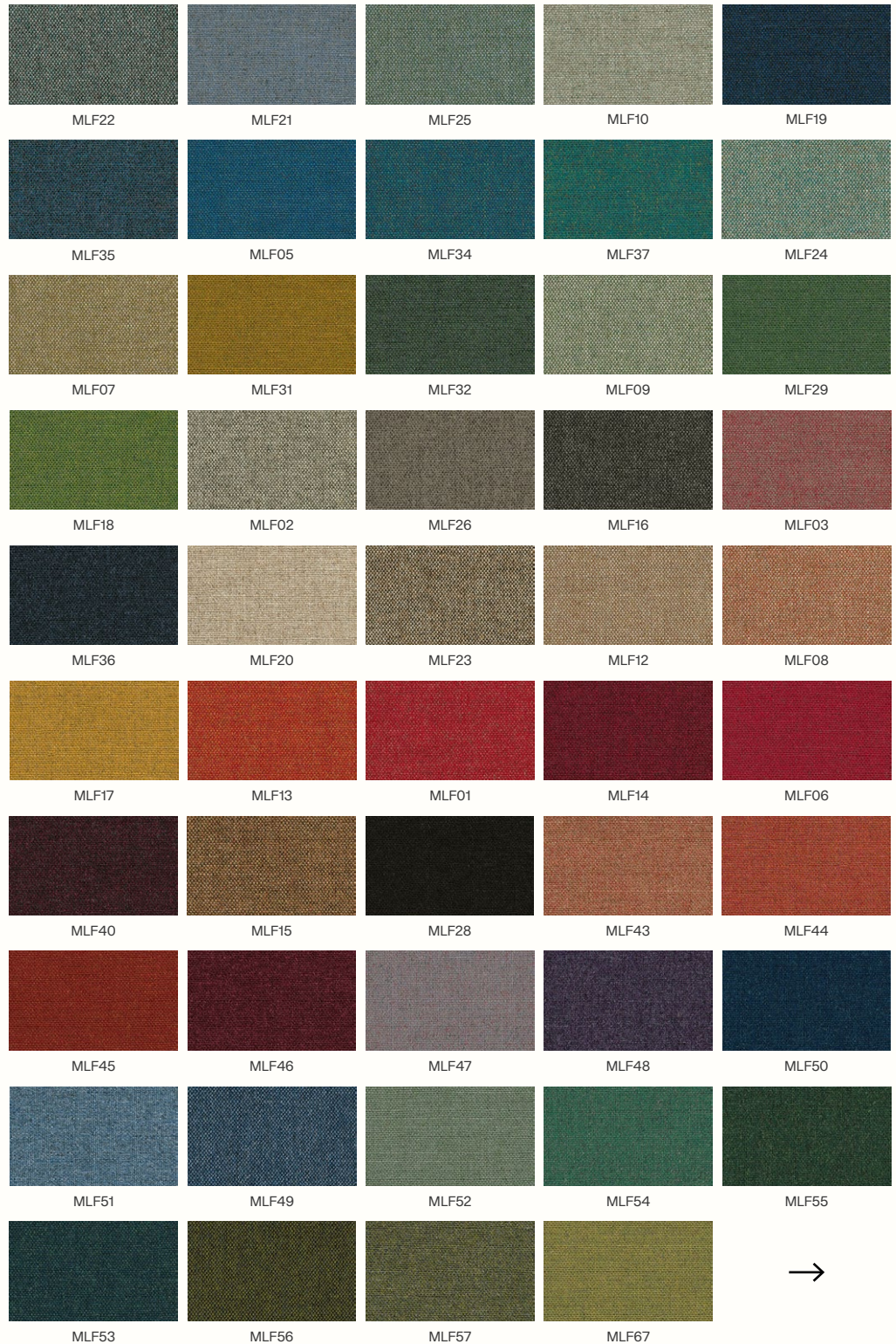
Pass for
Rico
Herman
Dase

More information [here](#).

firm LIVING colour selection (fabric swatches available)



All available colours



Main Line Flax

By Camira

Composition
75% virgin wool
25% flax

Fire rating
CAL117: pass
EN 1021 1/2: pass,
BS 5852 0,1 C&M: pass
Crib5: pass

Martindale
50.000

Price group
2

Care instructions
Vacuum frequently on medium power.
Remove wet stains by carefully dab-
bing with a lint-free cloth or sponge
wring in warm detergent-free water.
If the stain remains, we recommend
professional dry cleaning.

Colour fastness to light
4-5 (8)

Pilling
4 (5)

Pass for
Rico
Herman
Dase

More information [here](#).



Rich Velvet

Composition
100% polyester

Fire rating
CAL117: pass
EN 1021 1/2: pass
BS 5852 0,1 C&M: pass with treatment
BS 5852 Crib5: not pass

Martindale
170.000

Price group
2

Care instructions
Vacuum frequently on medium power.
Remove wet stains by carefully dabbing with a lint-free cloth or sponge wrung in warm detergent-free water.

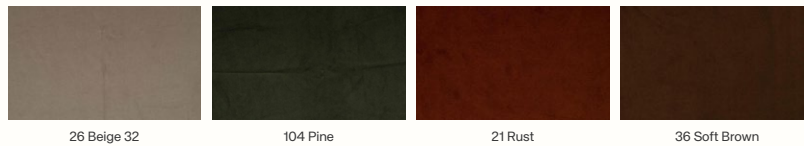
Colour fastness to light
6 (8)

Pilling
4-5 (5)

Pass for
Buur
Dase
Rico
Catena

More information [here](#).

ferm LIVING colour selection (fabric swatches available)



All available colours



Drape

Composition

55% linen
45% jute

Fire rating

CAL117: pass
EN 1021 1/2: pass
BS 5852 0,1 C&M: pass
Crib5: not pass

Martindale

≥ 20.000

Price group

2

Care instructions

Vacuum frequently on medium power.
Remove wet stains by carefully dabbing with a lint-free cloth or sponge wrung in warm detergent-free water. If the stain remains, we recommend professional dry cleaning.

Colour fastness to light

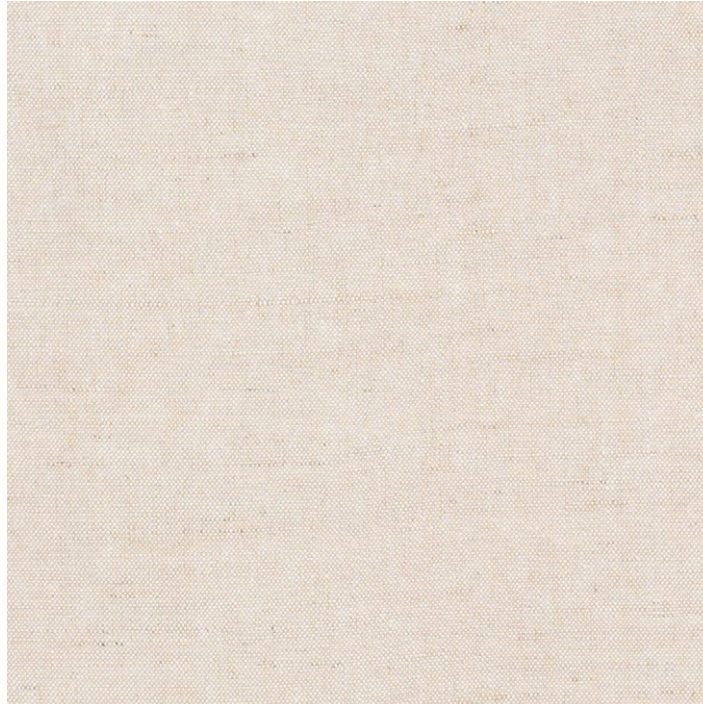
4 (8)

Pilling

≥ 4 (5)

Pass for

Catena - Loose Cover



Natural

Bouclé

Composition

35% acrylic
24% polyester
19% viscose
14% cotton
5% linen
3% other fibres

Fire rating

CAL117: pass
EN 1021 1/2: pass
BS 5852 0,1 C&M: pass
BS 5852 Crib5: not pass

Martindale

30.000

Price group

3

Care instructions

Vacuum frequently on medium power.
Remove wet stains by carefully dabbing with a lint-free cloth or sponge wrung in warm detergent-free water. If the stain remains, we recommend professional dry cleaning.

Colour fastness to light

4-5 (8)

Pilling

4 (5)

Pass for

Buur
Catena
Dase
Herman
Rico
Turn



Off-White



Sand

Check

Composition

30% wool
20% acrylic
15% cotton
15% polyester
10% linen
10% viscose

Fire rating

CAL117: pass
EN 1021 1/2: pass
BS 5852 0,1 C&M: pass
BS 5852 Crib5: not pass

Martindale

28.000

Price group

3

Care instructions

Vacuum frequently on medium power.
Remove wet stains by carefully dabbing with a lint-free cloth or sponge wrung in warm detergent-free water. If the stain remains, we recommend professional dry cleaning.

Colour fastness to light

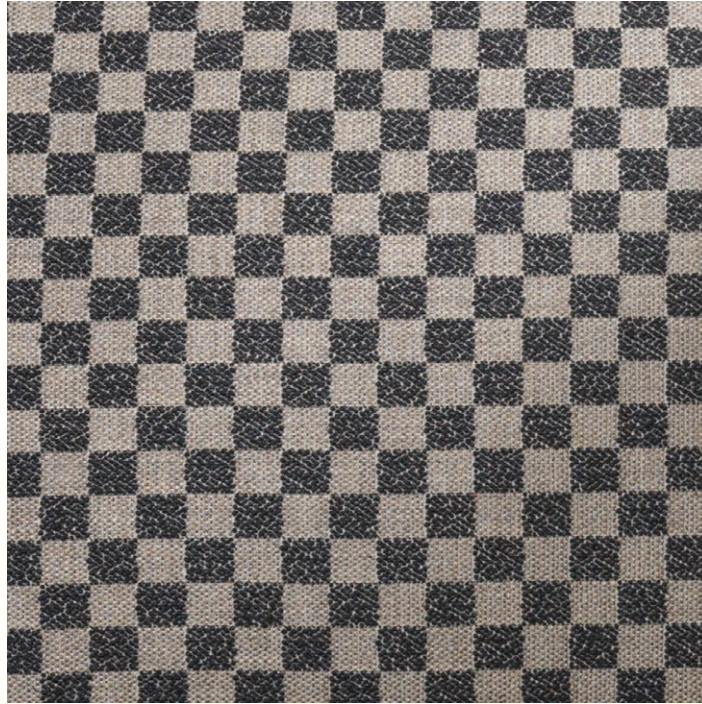
4-5 (8)

Pilling

4 (5)

Pass for

Catena



Sand/Black

Louisiana

Composition

20% wool
20% viscose
15% linen
15% cotton
15% polyester
15% acrylic

Fire rating

CAL117: pass
EN 1021 1/2: pass with treatment
BS 5852 0.1 C&M: pass with treatment
BS 5852 Crib5: pass with treatment

Martindale

30.000

Price group

3

Care instructions

Vacuum frequently on medium power.
Remove wet stains by carefully dabbing with a lint-free cloth or sponge wrung in warm detergent-free water. If the stain remains, we recommend professional dry cleaning.

Colour fastness to light

5 (8)

Pass for

Catena
Buur
Rico (not available for Rico Sofa Curve)



Sand/Black

Nordic Bouclé

Composition

30% wool
30% cotton
30% acrylic
5% polyester
5% other fibers

Fire rating

CAL117: pass
EN 1021 1/2: not tested
BS 5852 0,1 C&M: pass with treatment
Crib5: not pass

Martindale

25.000

Price group

3

Care instructions

Remove wet stains by carefully dabbing with a lint-free cloth or sponge wrung in warm detergent-free water. If the stain remains, we recommend professional dry cleaning.

Colour fastness to light

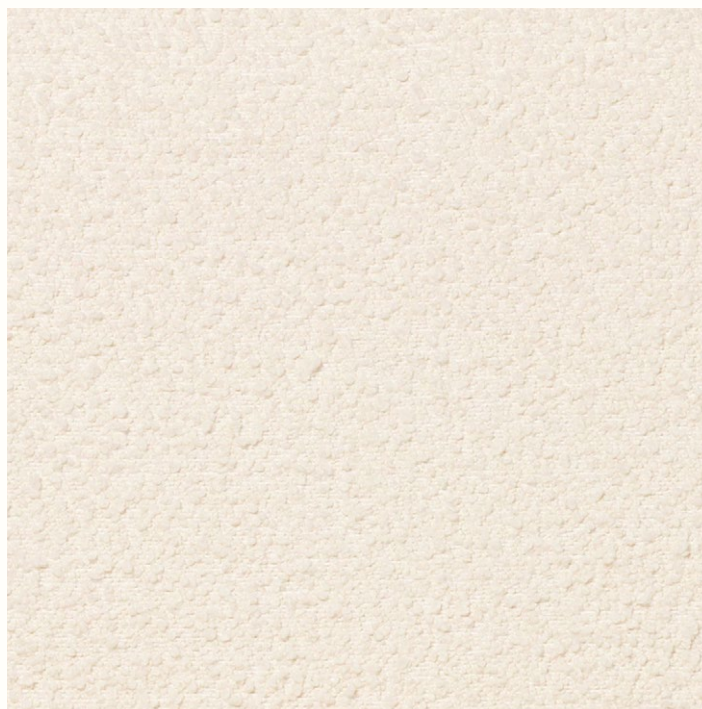
4 (8)

Pilling

3-4 (5)

Pass for

Buur
Catena
Dase
Rico



Off-white

Pasadena

Composition

34% linen
27% viscose
17% polyester
12% cotton
8% wool
2% acrylic

Fire rating

CAL117: pass
EN 1021 1/2: pass with treatment
BS 5852 0,1 C&M: pass with treatment
BS 5852 Crib5: not pass

Martindale

30.000

Price group

3

Care instructions

Vacuum frequently on medium power.
Remove wet stains by carefully dabbing with a lint-free cloth or sponge wrung in warm detergent-free water. If the stain remains, we recommend professional dry cleaning.

Colour fastness to light

5 (8)

Pilling

4 (5)

Pass for

Catena
Turn



Sand/Black

VEGEA™

Composition

VEGEA™ bio-based material.
Surface: 100% bio-compound VEGEA™ consisting of grape leftovers from winemaking and water-based PU
Backing: 100% GRS™-certified recycled polyamide.

Fire rating

CAL117: not pass
EN 1021 1/2: not pass
BS 5852 0,1 C&M: not pass
Crib5: not pass

Martindale

100.000

Price group

3

Care instructions

Wipe with a soft damp cloth or gently clean with soft sponge and mild, PH neutral detergent.

Colour fastness to light

5 (8)

Pass for

Herman



Black

Utzon-Can Lis

Composition

28% viscose
21% wool
21% acrylic
14% polyester
12% linen
4% cotton

Fire rating

CAL117: pass
EN 1021 1/2: pass with treatment
BS 5852 0,1 C&M: pass with treatment
Crib5: not pass

Martindale

35.000

Price group

3

Care instructions

Vacuum frequently on medium power.
Remove wet stains by carefully dabbing with a lint-free cloth or sponge wrung in warm detergent-free water. If the stain remains, we recommend professional dry cleaning.

Colour fastness to light

5 (8)

Piling

4 (5)

Pass for

Catena
Rico



Sand/Off-white

Ultra Leather

By Sørensen Leather

Composition
100% protected leather

Fire rating
CAL117: pass
EN 1021 1/2: pass
BS 5852 0,1 C&M: pass
BS 5852 Crib5: pass with treatment

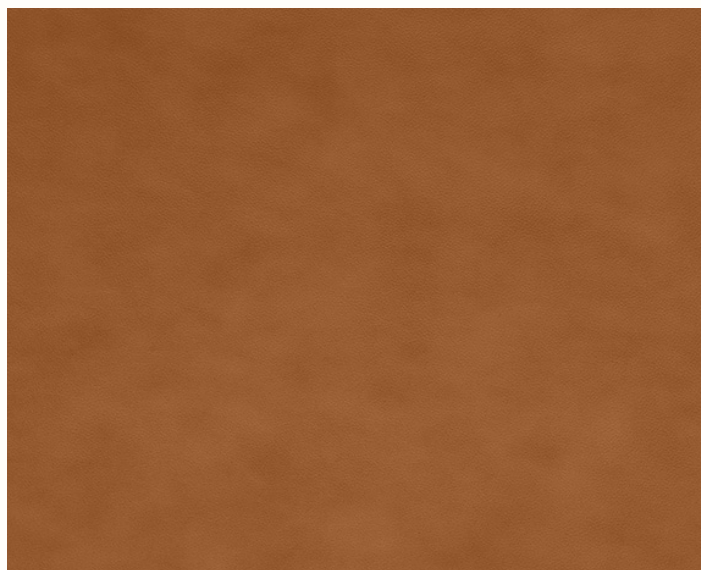
Price group
4

Care instructions
Vacuum frequently with a soft brush.
For stains use boiled water with natural soap. Whip 2-3 tablespoons of soap flakes in 1 litre water and only use the foam. Apply the foam with a soft cloth, let it dry and wipe off the leather thoroughly with a soft cotton cloth.

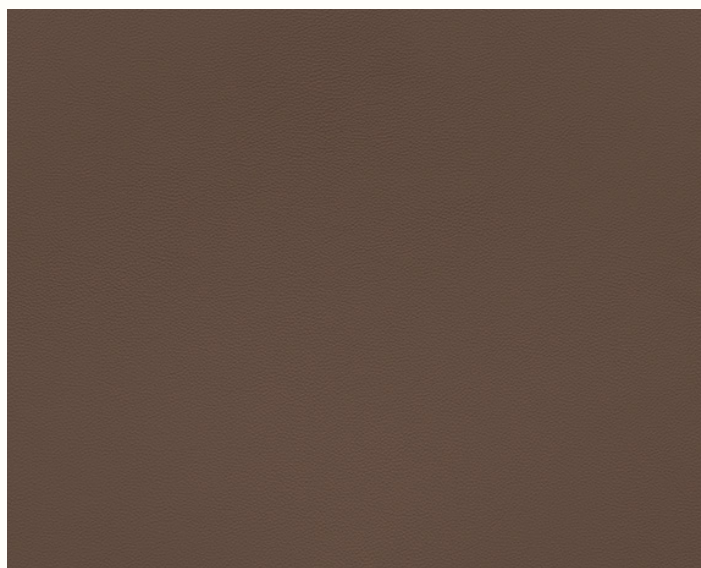
Colour fastness to light
≥ 5 (8)

Pass for
Herman

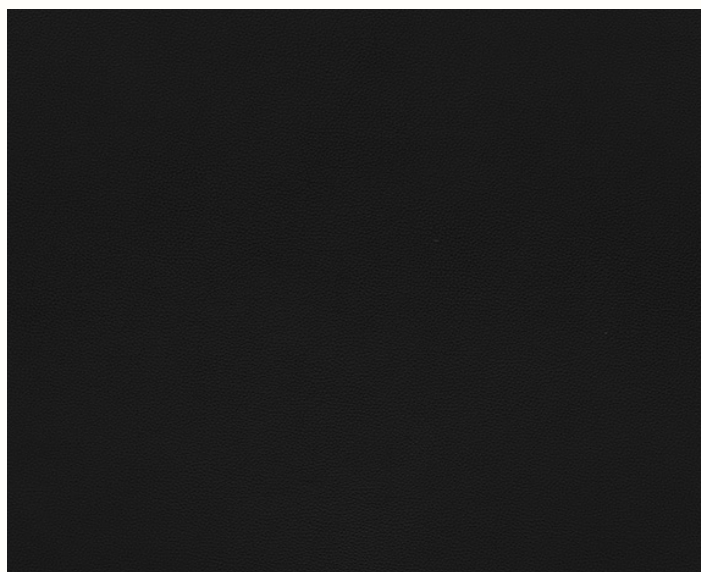
More information [here](#).



Brandy - 41574



Safari - 41586



Black - 41599

Rich Linen

Composition

100% linen

Fire rating

CAL117: pass
EN 1021 1/2: not pass
BS 5852 0,1 C&M: not pass - See alternative UK only option under Fabric Overview UK / Classic Linen.
BS 5852 Crib5: not pass

Martindale

20.000

Price group

4

Care instructions

Vacuum frequently on medium power.
Remove wet stains by carefully dabbing with a lint-free cloth or sponge wrung in warm detergent-free water. If the stain remains, we recommend professional dry cleaning.

Colour fastness to light

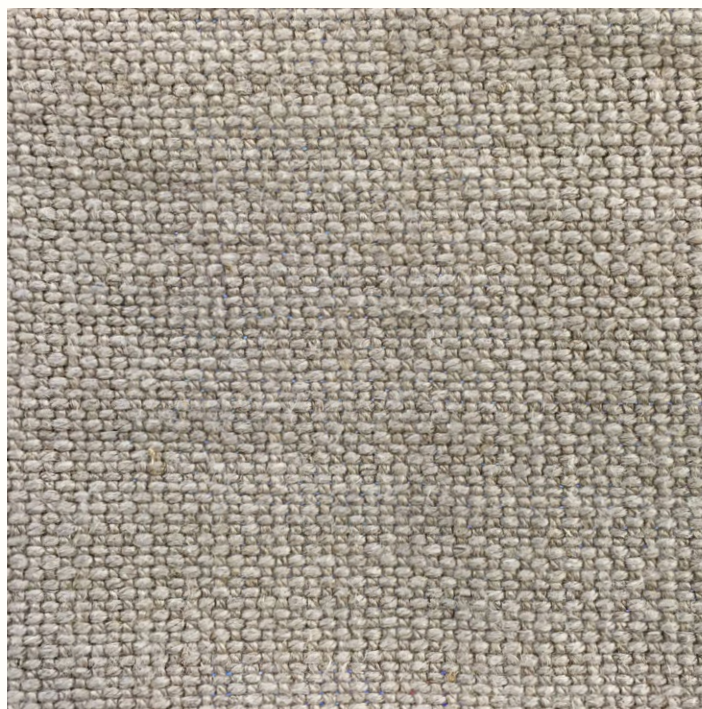
4 (8)

Pilling

4-5 (5)

Pass for

Catena



Natural

Tonus 4

By Kvadrat

Composition
90% new wool
10% helanca

Sustainability
EU Ecolabel
Greenguard Gold

Fire rating
CAL117: pass
EN 1021 1/2: pass
BS 5852 0,1 C&M: pass
BS 5852 Crib5: pass with treatment

Martindale
100.000

Price group
4

Care instructions
Vacuum frequently on medium power.
Remove wet stains by carefully dabbing with a lint-free cloth or sponge wrung in warm detergent-free water. If the stain remains, we recommend professional dry cleaning.

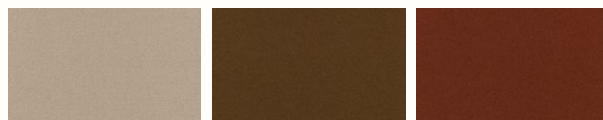
Colour fastness to light
5-7 (8)

Pilling
3 (5)

Pass for
Buur
Dase
Herman
Rico
Turn

More information [here](#).

ferm LIVING colour selection (fabric swatches available)



Off-white 0135

Sugar Kelp 0364

Red Brown 0474

All available colours



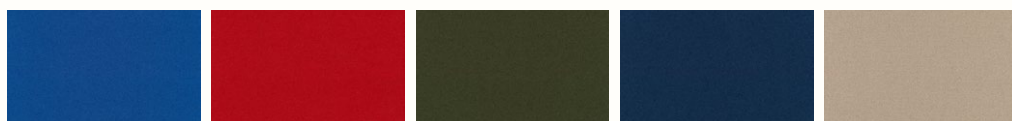
0100

0118

0125

0126

0128



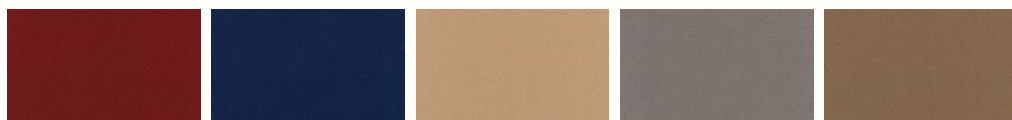
0129

0130

0131

0132

0135



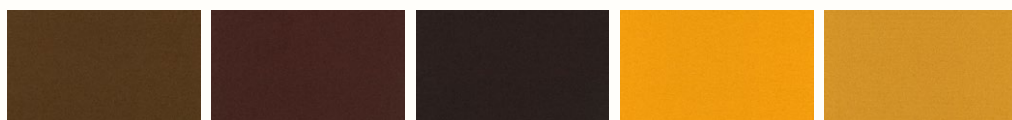
0207

0210

0224

0240

0244



0364

0374

0394

0424

0440



0454

0464

0474

0508

0554



0605

0608

0609

0610

0613



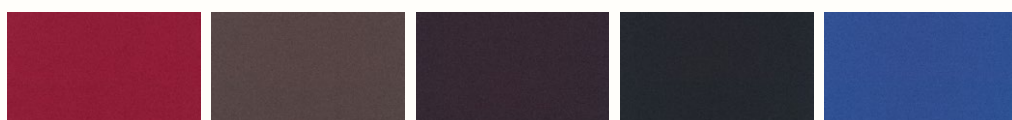
0615

0619

0631

0634

0636



0654

0664

0684

0690

0754



0764

0854

0914

0934

0954



0964

0974

Wool Bouclé

Composition

32% cotton
61% wool
7% nylon

Fire rating

CAL117: pass
EN 1021 1/2: pass
BS 5852 0,1 C&M: pass
BS 5852 Crib5: not pass

Martindale

25.000

Price group

4

Care instructions

Vacuum frequently on medium power.
Remove wet stains by carefully dabbing with a lint-free cloth or sponge wrung in warm detergent-free water. If the stain remains, we recommend professional dry cleaning.

Colour fastness to light

4 (8)

Pilling

4 (5)

Pass for

Catena
Rico



Off-white



Natural



Sugar Kelp

Hallingdal 65

By Kvadrat

Composition
70% new wool
30% viscose

Sustainability
EU Ecolabel
Greenguard Gold

Fire rating
CAL117: pass
EN 1021 1/2: pass
BS 5852 0,1 C&M:
pass
BS 5852 Crib5: pass

Martindale
100.000

Price group
5

Care instructions
Vacuum frequently on medium power.
Remove wet stains by carefully dab-
bing with a lint-free cloth or sponge
wring in warm detergent-free water.
If the stain remains, we recommend
professional dry cleaning.

Colour fastness to light
5-7 (8)

Pilling
3-4 (5)

Pass for
Catena
Dase
Herman
Rico
Turn
More information [here](#).

ferm LIVING colour selection (fabric swatches available)



All available colours



Hallingdal 65

By Kvadrat

Composition

70% new wool
30% viscose

Sustainability

EU Ecolabel
Greenguard Gold

Fire rating

CAL117: pass
EN 1021 1/2: pass
BS 5852 0,1 C&M: pass
BS 5852 Crib5: pass

Martindale

100.000

Price group

5

Care instructions

Vacuum frequently on medium power.
Remove wet stains by carefully dabbing with a lint-free cloth or sponge wrung in warm detergent-free water. If the stain remains, we recommend professional dry cleaning.

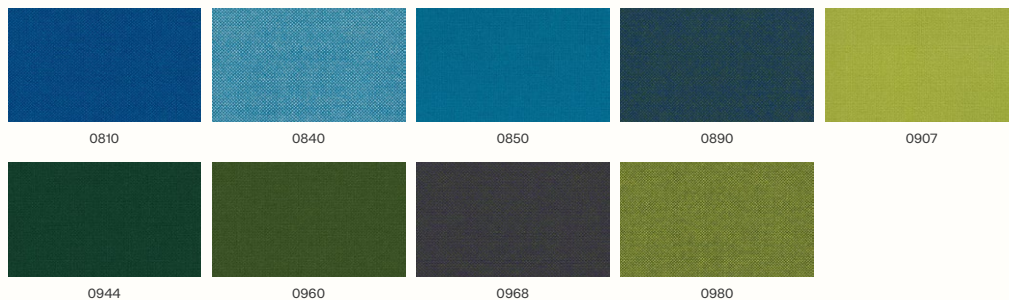
Colour fastness to light

5-7 (8)

Pass for

Catena
Dase
Herman
Rico
Turn

More information [here](#).



Leather - Envy

By Sørensen Leather

Composition
100% aniline leather

Fire rating
CAL117: pass
EN 1021 1/2: pass
BS 5852 0,1 C&M: not tested
BS 5852 Crib5: not pass

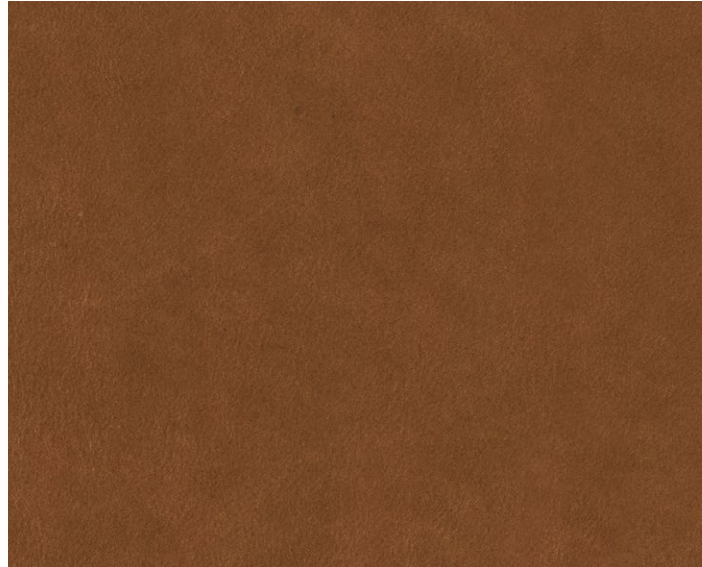
Price group
5

Care instructions
Vacuum frequently with a soft brush.
For stains use boiled water with natural soap. Whip 2-3 tablespoons of soap flakes in 1 litre water and only use the foam. Apply the foam with a soft cloth, let it dry and wipe off the leather thoroughly with a soft cotton cloth.

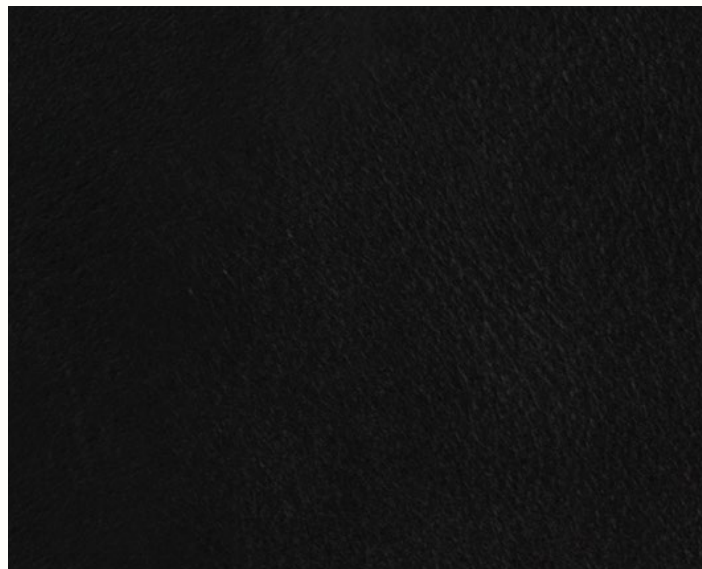
Colour fastness to light
3 (8)

Pass for
Herman

More information [here](#).



Cognac - 20320



Black - 20321

Patchwork

Composition

Patchwork with mixed fabrics including:

Classic Linen: 100% linen

Rich Linen: 100% linen

Bouclé: 35% acrylic, 24% polyester,
19% viscose, 14% cotton, 5% linen,
3% other fibres

Re-Cotton: 85% recycled cotton,
10% recycled polyester, 5% other fibers

Hot Madison: 63% cotton, 37% linen.

Fire rating

CAL117: not pass

EN 1021 1/2: not pass

BS 5852 0,1 C&M: not pass

BS 5852 Crib5: not pass

Martindale

Classic Linen: 25,000

Rich Linen: >20,000

Bouclé: 30,000

Re-Cotton: >30,000

Hot Madison: 55,000

Price group

5

Care instructions

Vacuum frequently on medium power.

Remove wet stains by carefully dabbing with a lint-free cloth or sponge wrung in warm detergent-free water.

If the stain remains, we recommend professional dry cleaning.

Colour fastness to light

Classic Linen: 5 (8)

Rich Linen: 4 (8)

Bouclé: 4-5 (8)

Re-Cotton: ≥4 (8)

Hot Madison: 4-5 (8)

Pilling

Classic Linen: 3-4 (5)

Rich Linen: 4-5 (5)

Bouclé: 4 (5)

Re-Cotton: ≥3 (5)

Hot Madison: N/A

Pass for

Catena (Large size ONLY)



Patchwork

Sheepskin

By Skandilock

Composition

Sheepskin, Australian Crossbred,
Lamb/Sheep

Fire rating

CAL117: pass
EN 1021 1/2: pass
BS 5852 0,1 C&M: pass
BS 5852 Crib5: pass

Price group

6

Care instructions

Use a sponge, lukewarm water, and a mild wool shampoo for cleaning and immediately treat any spots with water. Keep the furniture out of direct sunlight to prevent color changes in the wool.

Colour fastness to light

4-5 (8)

Pass for

Rico Lounge Chair
Rico Pouf
Buur

More information [here](#).



09 Moonlight



07 Sahara

For more information, please contact
your Ferm Living Sales contact

Space to feel comfortably you